

The manual transport system for the shop floor

MATERIAL LOGISTICS

## MHW – Trolley



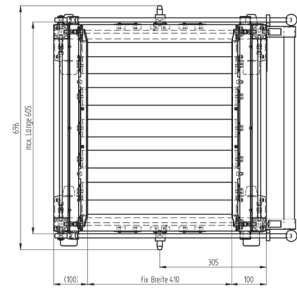
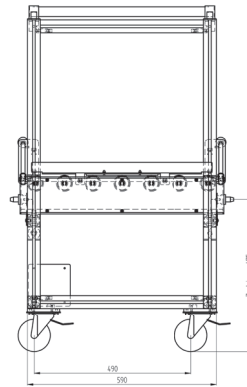
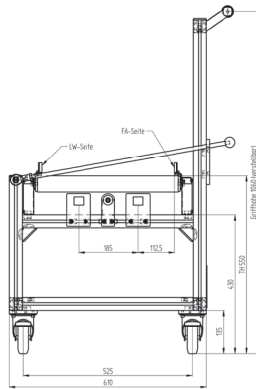
### Description:

The manual trolley has a roller conveyor to handle and transfer transport goods between several sources and targets. The orientation of the roller conveyor is crosswise to the driving direction of the trolley. The system is optimized to handle containers, like PCB-Magazines, SMD-Reel-Containers, KLT-Boxes or consumables at the shop floor. The platform is available in two dimensions, to provide a universal platform for different materials and container dimensions.

### Features:

- \_flexible transport platform
- \_hand-/takeover possibility at both end of the lane
- \_manual stoppers at both ends of the lane
- \_reflectors for handshake at both ends of the lane
- \_fixable castors

# Trolley | Technical Data



Trolley	MHW 01 Type 1	MHW 01 Type 2
<b>Machine Configuration</b>		
Number lanes	1	1
Number segments per lane	1	1
Transport height (mm)	550	550
Transport width max. (mm)	400	600
Interface	product transfer	product transfer
Transport direction (manual)	bidirectional	bidirectional
Operating side	front	front
Fixes rail (in MHW driving direction)	back	back
Side rail	front and back	front and back
Payload max. (kg)	50	50
<b>Transport good format</b>		
Transport good length (mm)	0 to 600	0 to 600
Transport good width (mm)	0 to 400	0 to 600
Transport good height (mm)	60 to 800	60 to 800
Payload per segment max. (kg)	50	50
<b>Installation Requirements</b>		
Power supply	-	-
Power supply system	-	-
Power consumption	-	-
<b>Machine Description</b>		
Length (mm)	696	896
Width (mm)	620	620
Height (mm)	1080	1080
Netto weight (kg)	34	39

**ASYS  
GROUP**

力丰电子|北京市西城区阜成门外大街2号万通新世界广场A1903室。

北京: 010 - 6857 8968

上海: 021 - 5046 1011

深圳: 0755 - 8832 1879

Subject to change without notice.

Some general descriptions and performance characteristics may not be applicable to all products. Technical specifications are subject to change without notice. Only features and technical data provided in purchasing contract are legally binding.

Printed in Germany